



TILEWARE

P R O D U C T S

Installation Procedures

for

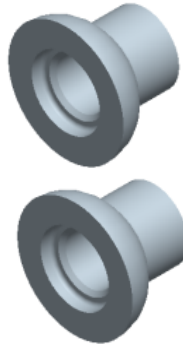
**PermaTile™ Fastener and
Promessa™ Series Baskets**

✠ Promessa™ Series Basket Installation ✠

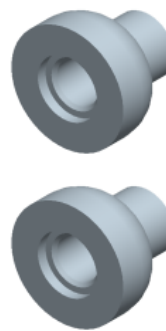
Part #	Description	Quantity
255276	Soap Dish Wire Basket	1
T100-501	Standard Wall Ferrules Kit	1 set – 2 pieces
T100-502	Thin Wall Ferrules Kit	1 set – 2 pieces
T100-503	Screw and Plug Kit	1 set – 4 pieces
T100-504	PermaTile™ 3"x3 1.8" Fastener with plastic thumb screws and stabilizing bracket	1

T100-001 Parts Included

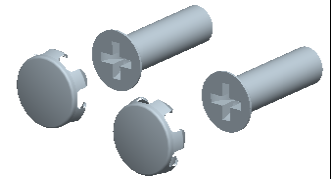
T100-501



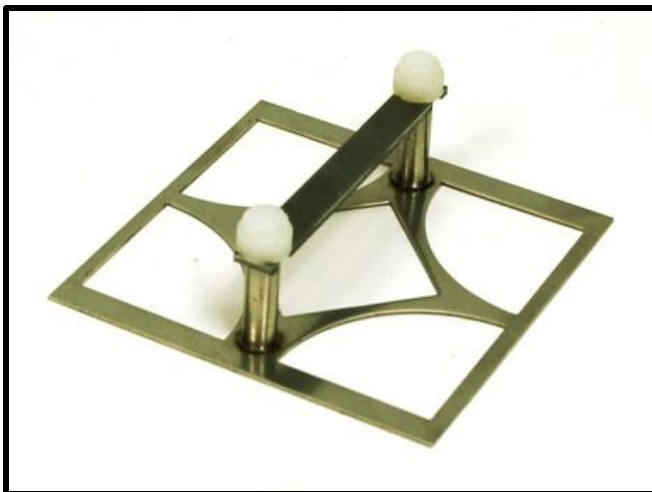
T100-502



T100-503



255276



✠ Promessa™ Series Basket Installation ✠

STEP 1 Determine Basket Location

Step 1 Procedures:

- Determine the wall surface where the PermaTile™ Fastener should be located.
- Apply thin-set mortar with no less than a 1/4"x3/8" notch trowel.



Warning: Use only latex modified mortars that meet ANSI A118.4 performance standard

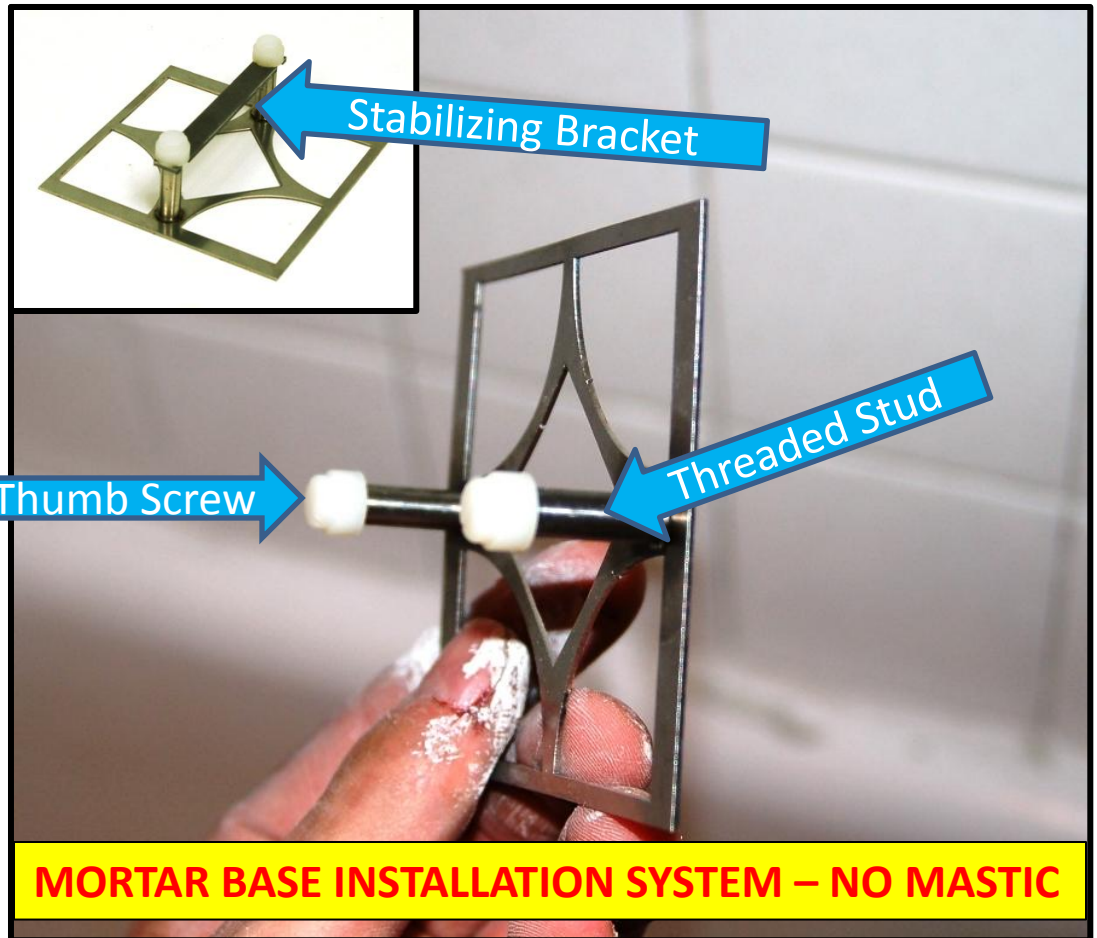
MORTAR BASE INSTALLATION SYSTEM – NO MASTIC

✠ Promessa™ Series Basket Installation ✠

Step 2 Procedures:

- Prepackaged plastic thumb screws should not be removed until after grouting.
- Each fastener is equipped with a stabilizing bracket. The bracket ensures that basket will mount every time. Remove bracket after thin-set has cured for 24 hours.

STEP 2 Understand Fastener



Technical Fact:

- *Each PermaTile™ Fastener is constructed from high quality, solid stainless steel materials.*
- *The welded fastener is equipped with 8-32 internal thread studs.*

Warning: Each threaded stud is covered with a plastic thumb-turn screw to prevent thin-set mortar from corrupting thread. Do not remove until after grouting.

✠ Promessa™ Series Basket Installation ✠

STEP 3 Install PermaTile Fastener

Step 3 Procedures:

1. Press the PermaTile™ Fastener into the combed thin-set mortar at the predetermined location.
2. Key thin-set mortar into the back side of tile to ensure proper contact and adhesion.
3. Adjust as necessary, setting stud directly on tile edge.



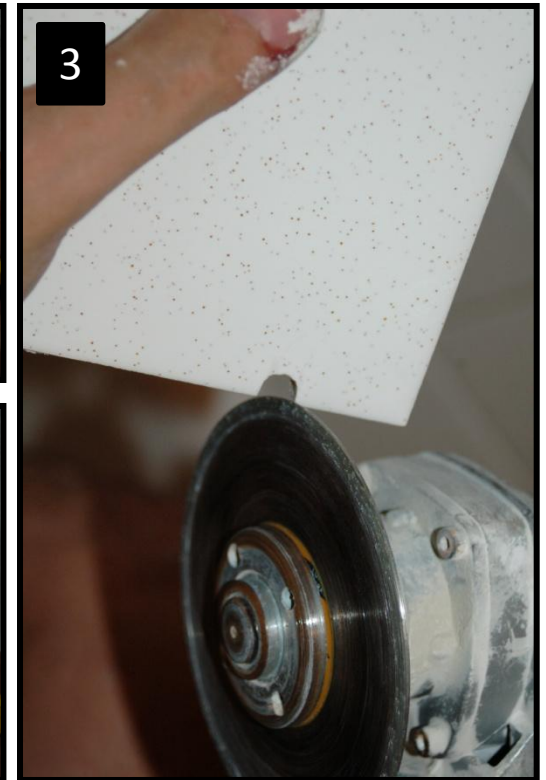
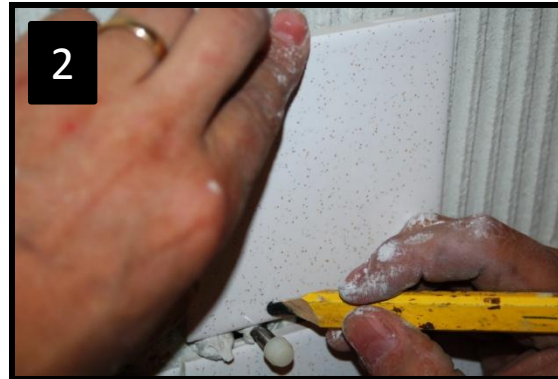
MORTAR BASE INSTALLATION SYSTEM – NO MASTIC

✠ Promessa™ Series Basket Installation ✠

STEP 4 Notch Tile

Step 4 Procedures:

1. Mark left side notch location.
2. Mark right side notch location.
3. Using an angle grinder, remove enough material allowing 1/16" of adjustment side to side and up and down.



Warning: Notches and holes should not exceed 3/8" in diameter to ensure ferrule has sufficient surface area during mounting.

❖ Promessa™ Series Basket Installation ❖

STEP 5 Install Notched Tile

Step 5 Procedures:

1. Key thin-set mortar into the back side of tile to ensure proper contact and adhesion.
2. Press tile into wall and adjust as necessary.
3. This completes the fastener installation portion. Continue setting all other tile, allowing proper cure time as specified by thin-set manufacturer.



Warning: Do not proceed with accessory installation until after thin-set mortar has met minimum curing requirements specified by manufacturer.

✠ Promessa™ Series Basket Installation ✠

Step 6 Procedures:

- Immediately proceed to accessory mounting after grouting is completed.
- Simply slip ferrules over studs.
- Included with each basket assembly are 2 ferrule styles. Each style contains two pieces.

Technical Facts:

- Ferrule Styles
 - **Standard Wall Ferrules** are 7/16" in length and will work with all tiles 1/4" to 7/16 in thickness.
 - **Thin Wall Ferrules** are 5/8" in length and will work with all tiles thicknesses under 1/4" in thickness.

STEP 6 Install Ferrules



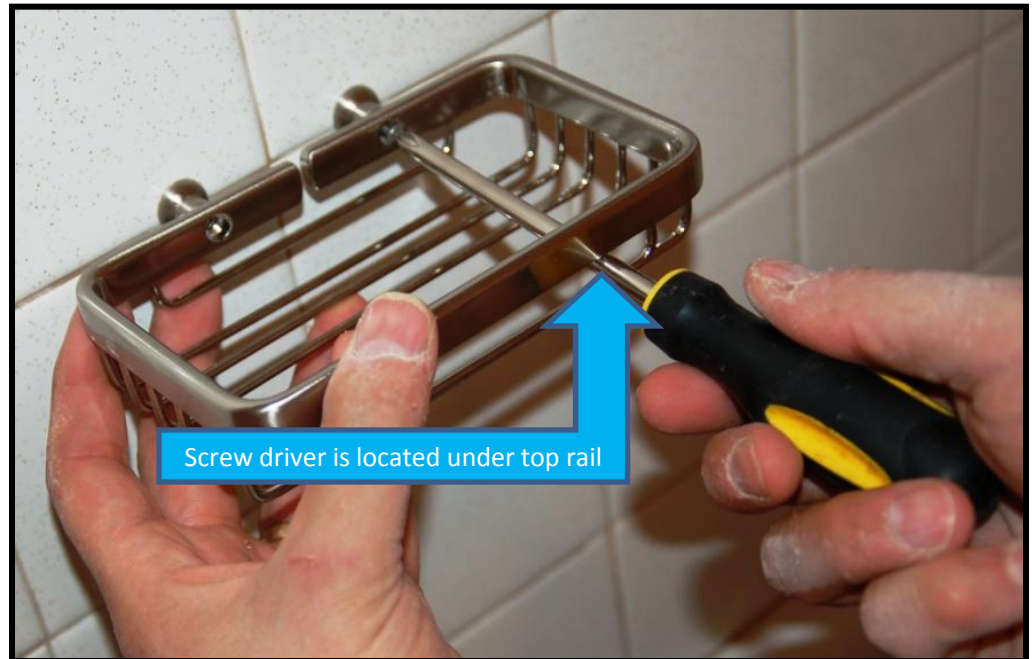
✠ Promessa™ Series Basket Installation ✠

Step 7 Procedures:

- Each basket accessory is drilled with 2 countersunk holes that will match stud locations.
- Simply insert 8-32 stainless steel screw through hole in basket and attach to threaded stud.
- Using a 6" phillips head screw driver, attach screw firmly to basket accessory. Observe in photograph that the screw driver is situated under top rail to avoid scratching.
- After basket is installed, use a level to determine if basket is level. Adjust physically with your hands, after which retighten screws.

Warning: Make sure screw and stud are parallel to avoid cross-threading. Turn carefully, cross-threading will require fastener removal.

STEP 7 Install Basket Accessory



✠ Promessa™ Series Basket Installation ✠

Step 8 Procedures:

- Included with each basket assembly are 2 decorative plugs. Plugs will cover drilled holes for screw attachment.
- Place plug over exposed hole and press to insert. Ease of installation requires that all prongs evenly enter drilled hole.
- Installation complete.

STEP 8 Install Decorative Plugs

